

## Professional Development



### Training

Our many years of working with people with disability have enabled us to develop training for professionals, parents, carers, teachers, families, and anyone supporting a person with disability. Delivered at your location or at our Northbridge venue.



### eLearning

Our online learning units are an education option for professionals, parents, and carers.



### Teaching Resources

Teaching modules are available for purchase, containing lesson plans and worksheets to support teachers in implementing sex education, respectful relationships and protective behaviours programs into their curriculum.

## Referrals, Programs and Training



To make a referral or enquire about training and programs please see our website [shq.org.au/disability](https://shq.org.au/disability)

### Contact us

☎ 08 9227 6414

✉ [support@shq.org.au](mailto:support@shq.org.au)

## Looking for more information?



### Disability

☎ 08 9227 6414 ✉ [support@shq.org.au](mailto:support@shq.org.au)

### Sexual Health Quarters (SHQ)

☎ 08 9227 6177 ✉ [info@shq.org.au](mailto:info@shq.org.au)  
70 Roe Street, Northbridge WA 6003

### Sexual Health Helpline

☎ 08 9227 6178 ✉ [sexhelp@shq.org.au](mailto:sexhelp@shq.org.au)

Find us on social media



[shq.org.au](https://shq.org.au)

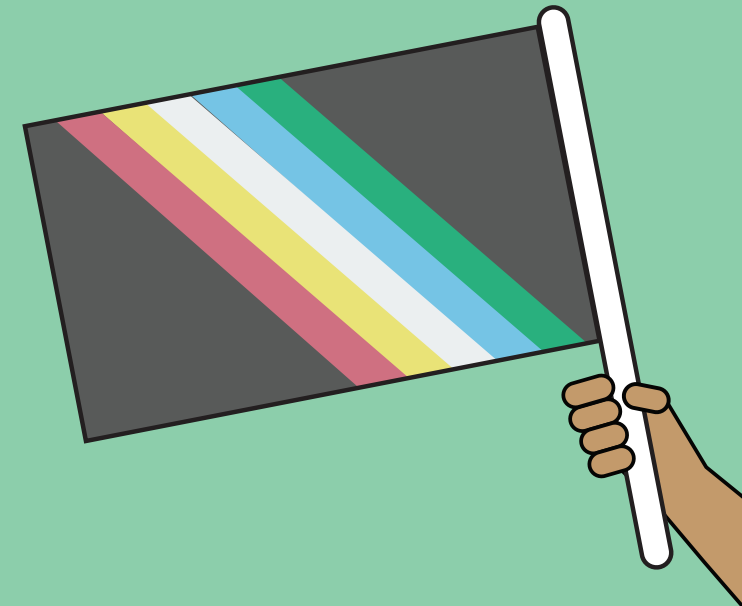


SHQ recognises Aboriginal and Torres Strait Islander peoples resilience, strength and deep spiritual connection to land, waters and community as Australia's First People.

© The Family Planning Association of Western Australia (Inc.) August 2023

## Sexual Health Quarters

# Disability Services



## About Us

Our specialist team has been providing counselling and education to people with disability for over 30 years. We also provide strategies and learning opportunities for parents, carers, and other supports.

### Appointment Options



- ▶ Monday to Friday
- ▶ Face-to-face at any of our locations
- ▶ Telehealth - phone or video anywhere in WA

### Our Services



Individual counselling and education



Support for parents, carers and families



Outreach programs e.g. schools, supported accommodation or employment



Supported visits to our sexual health clinic



Professional development and training options



Information and resources

Topics we can offer support on include:

- ▶ Respectful relationships
- ▶ Consent
- ▶ Protective education
- ▶ Public and private concepts
- ▶ Self-esteem, feelings, resilience
- ▶ Puberty, masturbation, menstruation
- ▶ Sexual health
- ▶ Contraception and pregnancy choices
- ▶ Family and domestic violence
- ▶ Sexual abuse

And more - please reach out to us if you would like to know how we can provide support.

### Individual Counselling

Our experienced counsellors and educators offer safe and non-judgemental counselling and support.

We are a registered NDIS provider. To access our counselling services through your NDIS plan, please ensure you have funding available via: Assessment Recommendation Therapy or Training - Counsellor 15\_043\_0128\_1\_3.

### Need support without an NDIS plan?



Individuals who are at risk or have concerns that are impacting relationships, employment, or accommodation can access our counselling services at no cost, even if they do not have NDIS funding. This is kindly funded by Department of Communities. Our clinic also provides affordable counselling services for people with a wide variety of needs.

## How to access counselling



We require a referral form prior to booking an appointment. This can be found on our website [shq.org.au/disability/counselling](http://shq.org.au/disability/counselling) or scan the QR code.

## Education



### School Programs

If you're a school looking for specialised education for your students, we offer tailored programs to suit a diverse range of needs for primary and secondary students.



### Workshops

If a full program is not suited to your needs, workshops are available to schools, young people and supported adult services such as workplaces, accommodation, social groups and more.

## Our Locations

- ▶ Northbridge
- ▶ Joondalup
- ▶ Mandurah
- ▶ Bunbury
- ▶ Busselton
- ▶ Albany